



INSTALLATION INSTRUCTIONS

IMPORTANT: BEFORE YOU BEGIN

This guide is designed to install a 1000mm wide door onto a typical **900mm** square set opening. Some changes may be required depending on your situation. Read instructions fully before starting the installation of your barn door. Not following the installation instructions can cause the unit to work in an unsafe manner and cause injury.

The Frontier Barn Door Sliding System has been designed to work as a total system. Any modification to the door or the hardware will void the warranty and may cause the unit to work incorrectly.

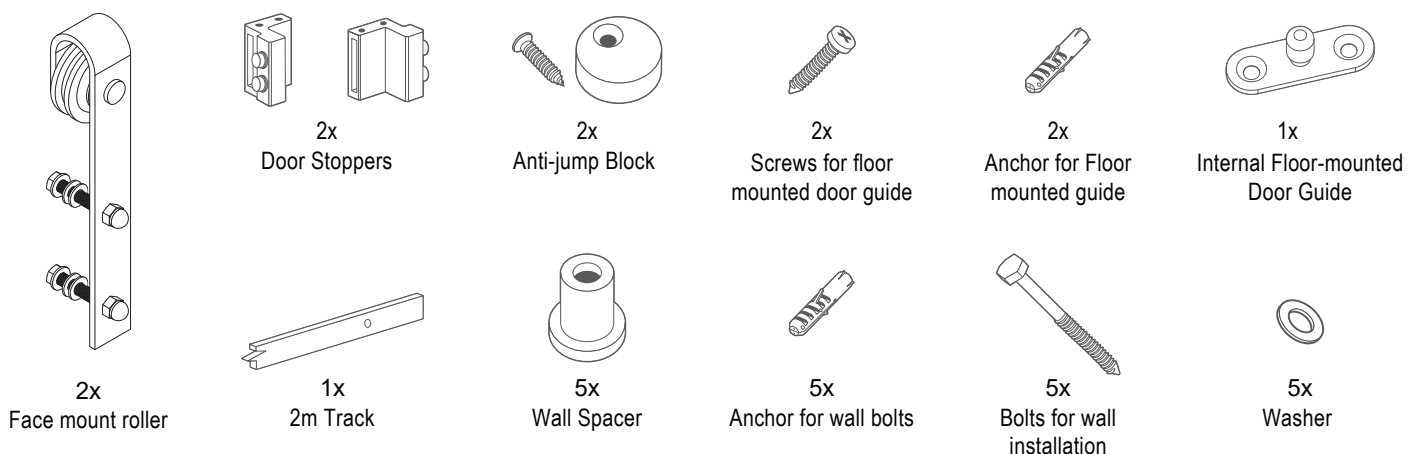
When installing directly into a **non-concrete wall**, do not attempt to fix the track solely to the plasterboard or any wall surface as this may not support the weight of the track and mounted door. The track must be installed onto a piece of solid wood blocking (mounting board) using mounting screws.

Ensure the solid wood blocking is secured into the structural surface. Use a stud finder where necessary to locate studs and secure safely. Typical solid wood blocking (mounting board) should be a 92mm x 18mm solid timber board 2.1 m in length.

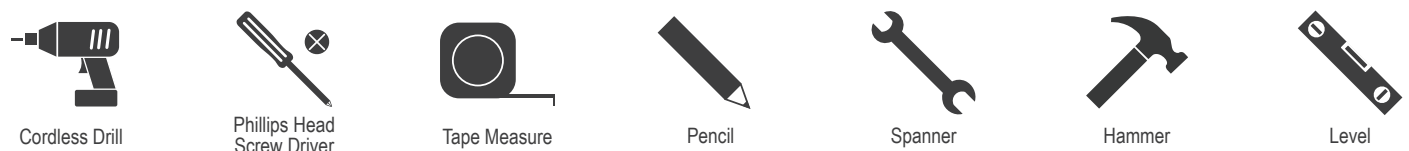
Mounting board and screws are not included.



TRACK COMPONENTS



TOOLS NEEDED

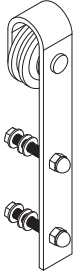




FRONTIER

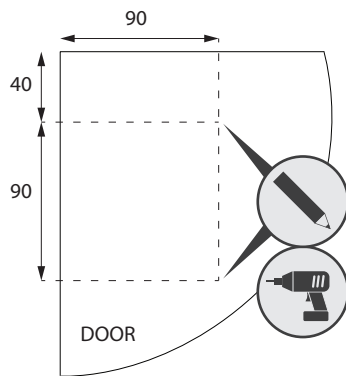
BARN DOOR SLIDING SYSTEM

1. ATTACH THE ROLLERS TO DOOR

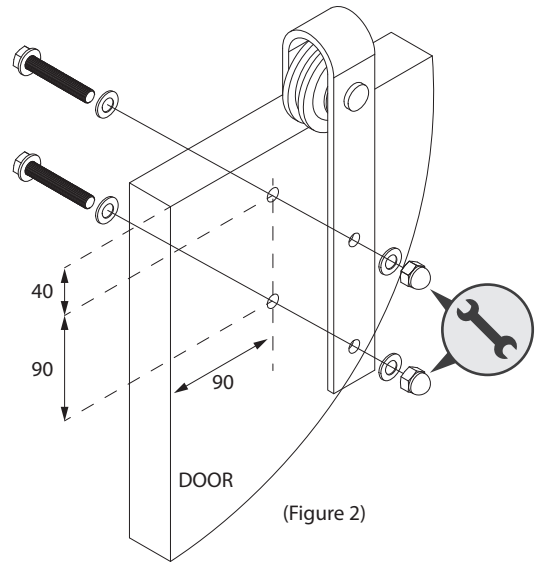


Face mount roller (x2)

- 1.1. Mark the first hole 90mm from the side edge and 40mm down from the top edge of the door with a pencil (Figure 1).
- 1.2. Mark the second hole 90mm further down from the first hole (Figure 1).
- 1.3. Pre-drill both holes using a 10mm drill bit (Figure 1).
- 1.4. Using a spanner, fix the roller in place. Ensure the roller is secure and straight on the door (Figure 2).
- 1.5. Repeat this process for the other roller.
- 1.6. Go to STEP 2

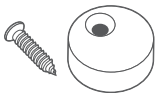


(Figure 1)



(Figure 2)

2. ANTI-JUMP BLOCK INSTALLATION

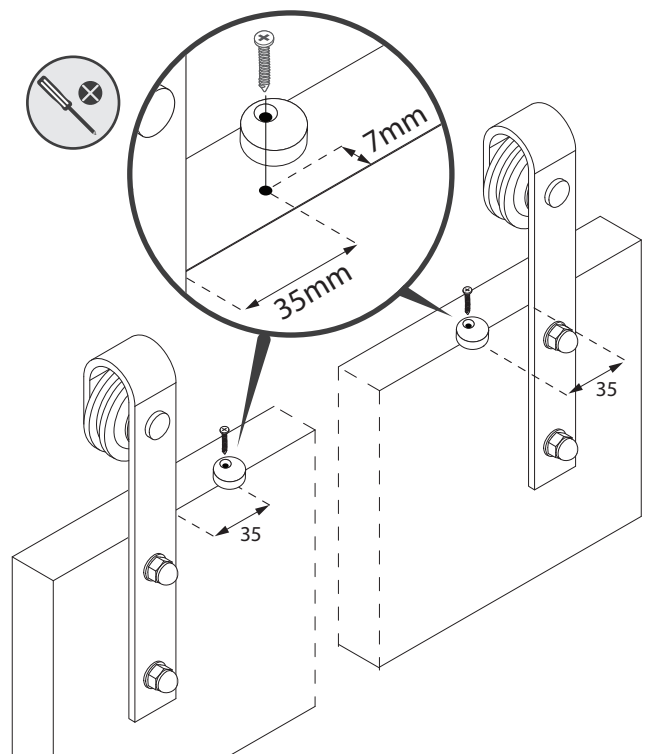


Anti-jump block and screws (x2)

- 2.1. Measure and mark 35mm from the edge of rollers and 7mm from the face of the door.
- 2.2. Pre drill using a 3mm drill bit and fix anti-jump blocks using screws provided.

NOTE: The hole for the anti-jump blocks should be offset from the centre of the door so the block can be rotated out of the way when hanging the door on the track.

- 2.3. Go to STEP 3





FRONTIER

BARN DOOR SLIDING SYSTEM

3. MEASURE AND MARK FOR TRACK LOCATION

3.1. Using a ladder, tape measure and level, find the **centre line** position for the track by adding 43mm to the door height. Measure from the floor up and mark with a pencil.

3.2. For a **900mm** opening, the "Start Location" of the track is **75mm** from the edge of the opening. Measure **75mm** from the edge of the opening and mark "Start Location" of track on the **centre line**.

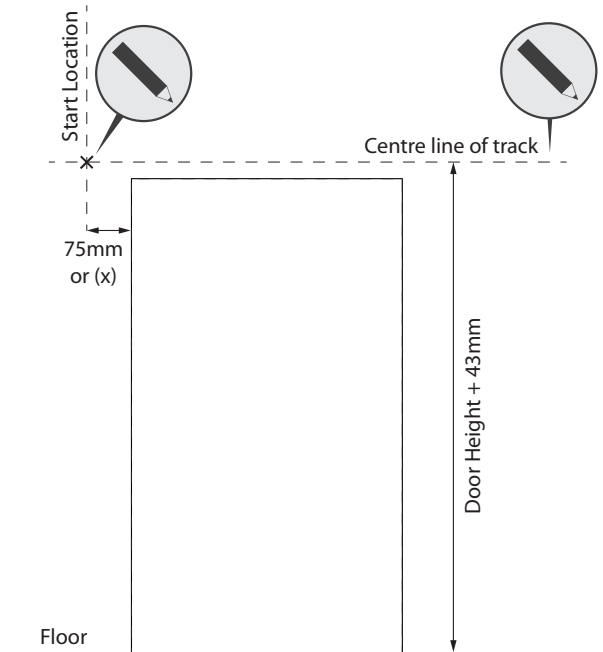
NOTE: If your opening is **less than 900mm** use the following formula to find the "Start Location" of track:

$$(1000 - \text{Opening Width}) / 2 + 75 = (x)$$

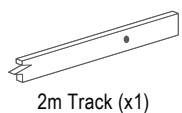
Measure (x) from the edge of the opening and mark "Start Location" of track on the **centre line**.

3.4. For fixing track to a **CONCRETE WALL** wall [Go to STEP 4](#)

3.5. For fixing track to a **NON-CONCRETE WALL** wall [Go to STEP 6](#)



4. CONCRETE WALL: WALL PREPARATION



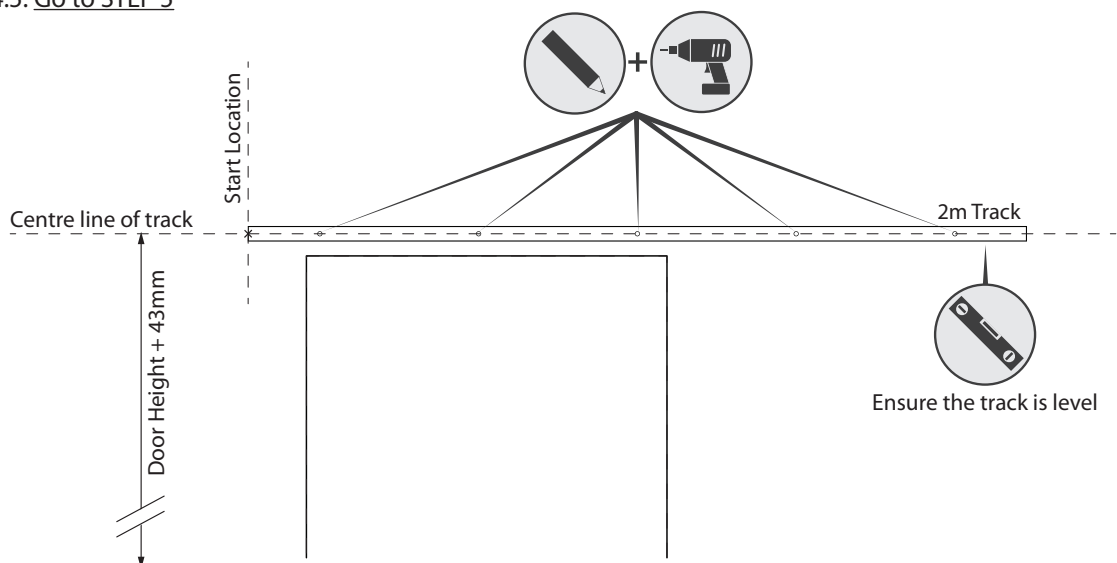
4.1. Position the track centred on the "Start Location" and ensure track is level.

4.2. Use the track as a template and mark mounting hole locations with a pencil.

4.4. Pre-drill the concrete at marked locations using a 10mm masonry drill bit.

(TIP: Temporarily install track with one end bolt. This will create a pivot point to easily level the track. Mark the rest of your holes)

4.5. [Go to STEP 5](#)

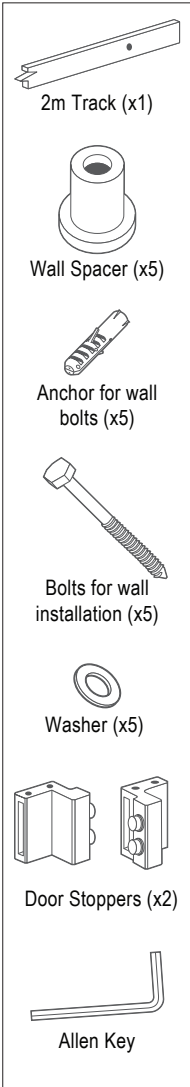




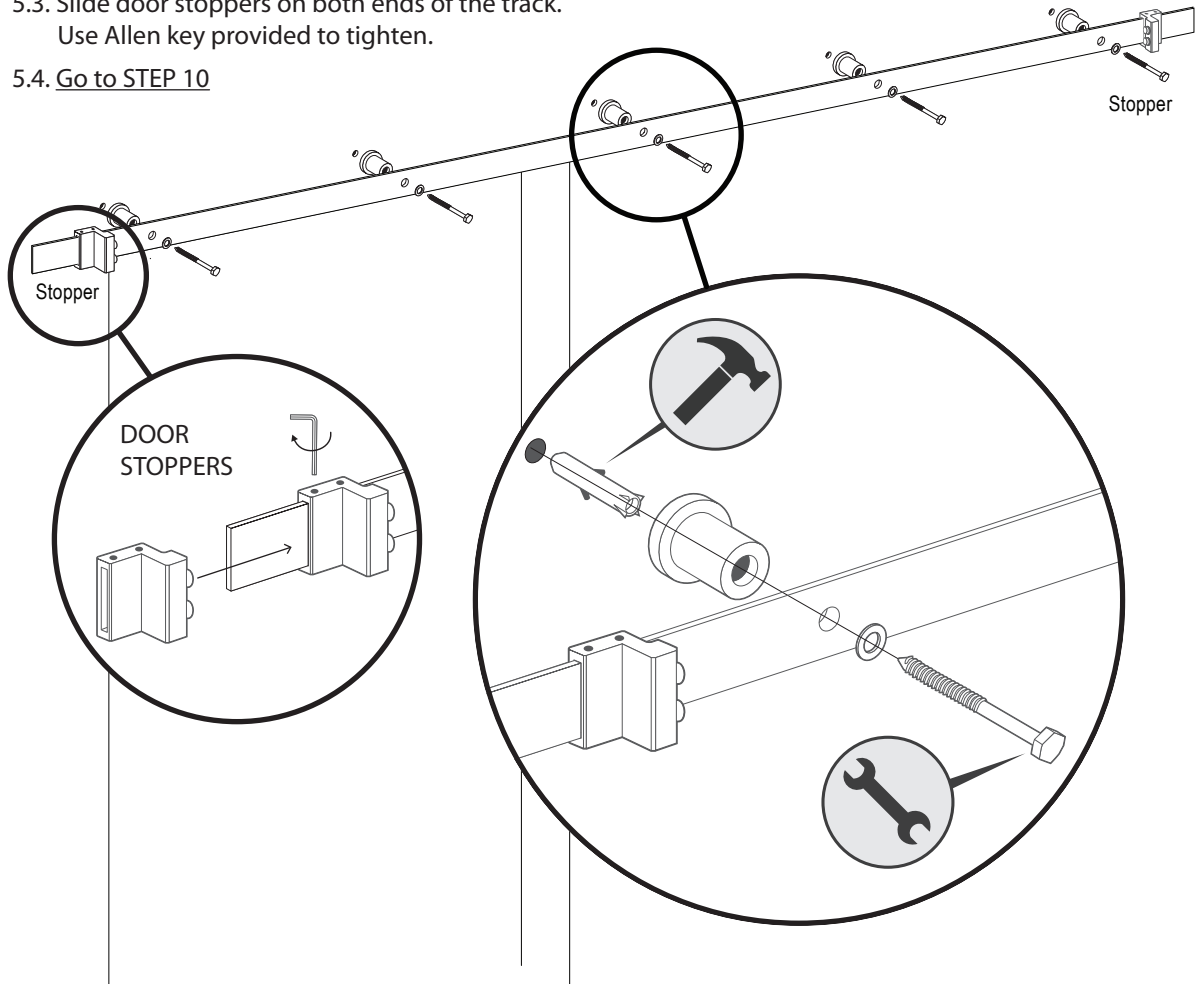
FRONTIER

BARN DOOR SLIDING SYSTEM

5. CONCRETE WALL: MOUNTING THE TRACK



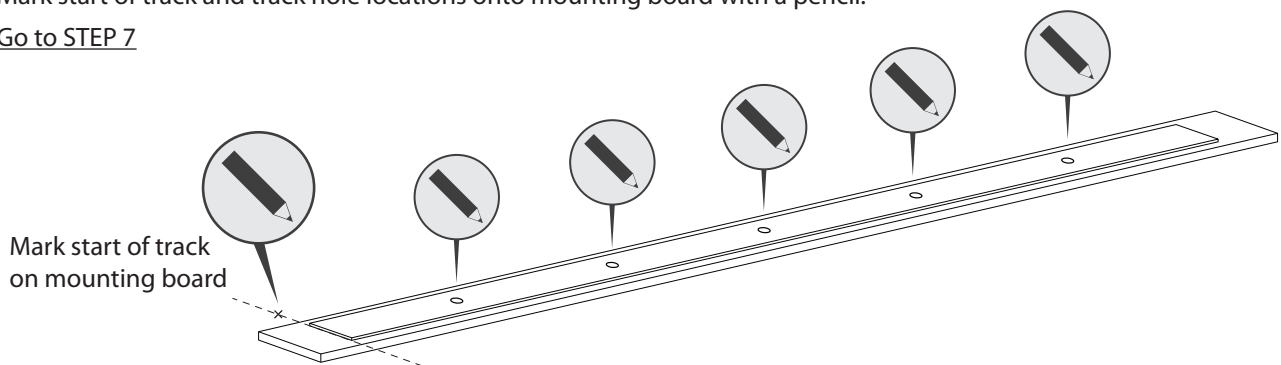
- 5.1. Install anchors into holes using a hammer.
- 5.2. Install track with bolts, washers and spacers using a spanner.
- 5.3. Slide door stoppers on both ends of the track.
Use Allen key provided to tighten.
- 5.4. Go to STEP 10



6. NON-CONCRETE WALL: MARK TRACK HOLES ON MOUNTING BOARD

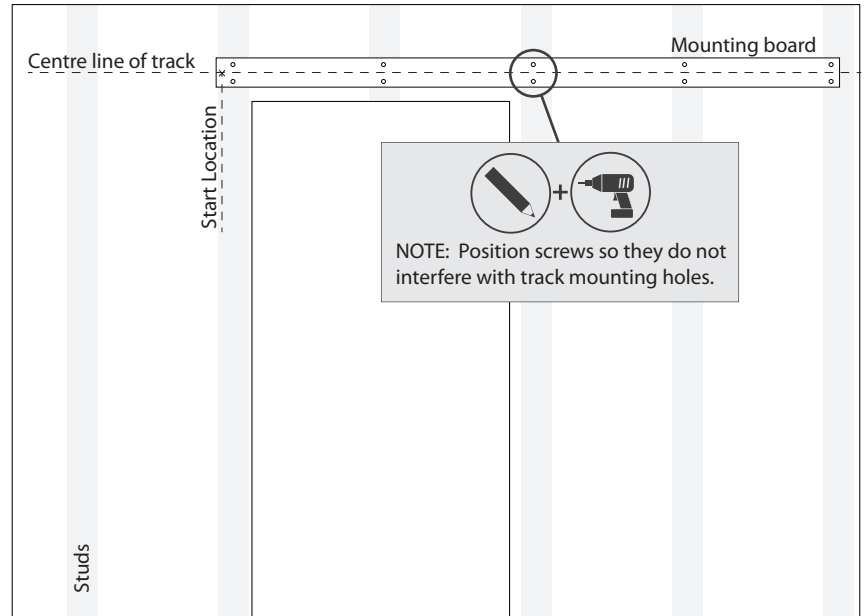
NOTE: Mounting board and screws not supplied.

- 6.1. On a flat surface, centre the track on the mounting board (ensure the track is straight on the board).
- 6.2. Mark start of track and track hole locations onto mounting board with a pencil.
- 6.3. Go to STEP 7



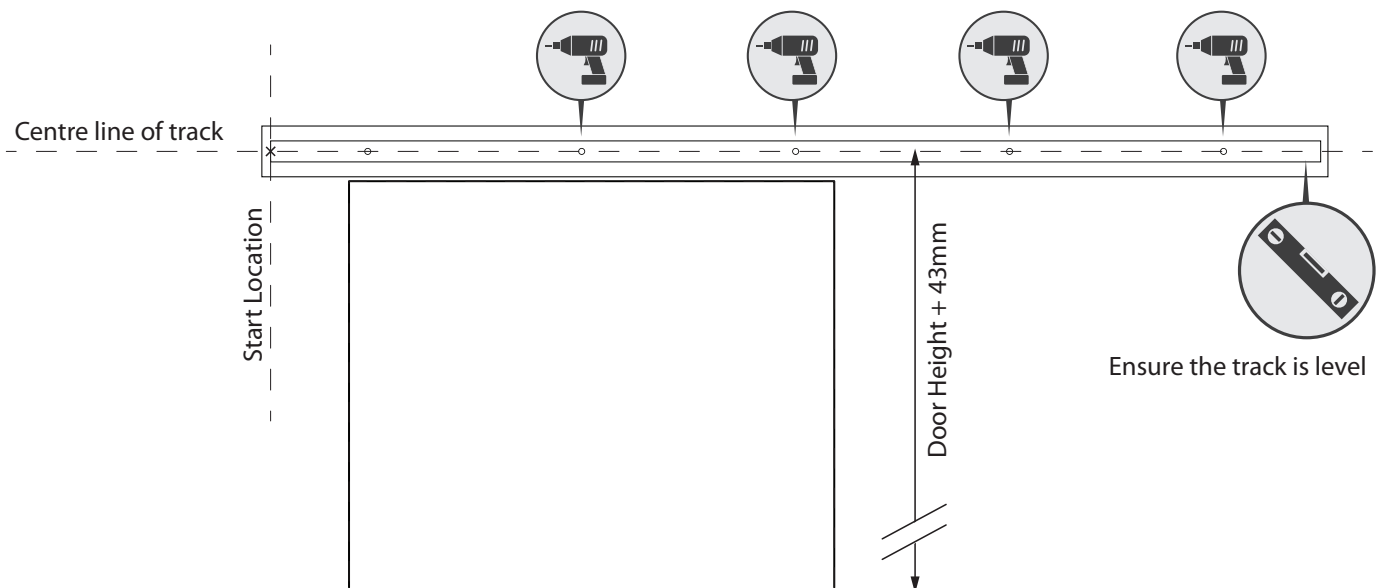
7. NON-CONCRETE WALL: ATTACH THE MOUNTING BOARD TO WALL

- 7.1. Use a stud finder to find the framing material (studs) behind the wall and mark their locations.
- 7.2. Position the mounting board on the wall ensuring it is level and centred on the centre line. Be sure to line up the start mark on the mounting board with your "Start Location" - not the edge of the mounting board.
- 7.3. Fix mounting board through wall into studs.
(TIP: Locate and install one screw at end of the mounting board first. This will hold one end of the board so you can move/pivot the free end and ensure the board is level as you install the other screws.)
- 7.4. Go to STEP 8



8. NON-CONCRETE WALL: PRE-DRILL MOUNTING BOARD

- 8.1. Drill pilot holes for track bolts into mounting board at marked locations from Step 6.
(TIP: Temporarily install track with one end bolt. This will create a pivot point to easily level the track. Drill the rest of your holes)
- 8.2. Go to STEP 9

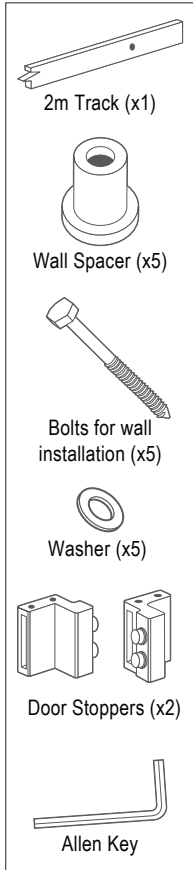




FRONTIER

BARN DOOR SLIDING SYSTEM

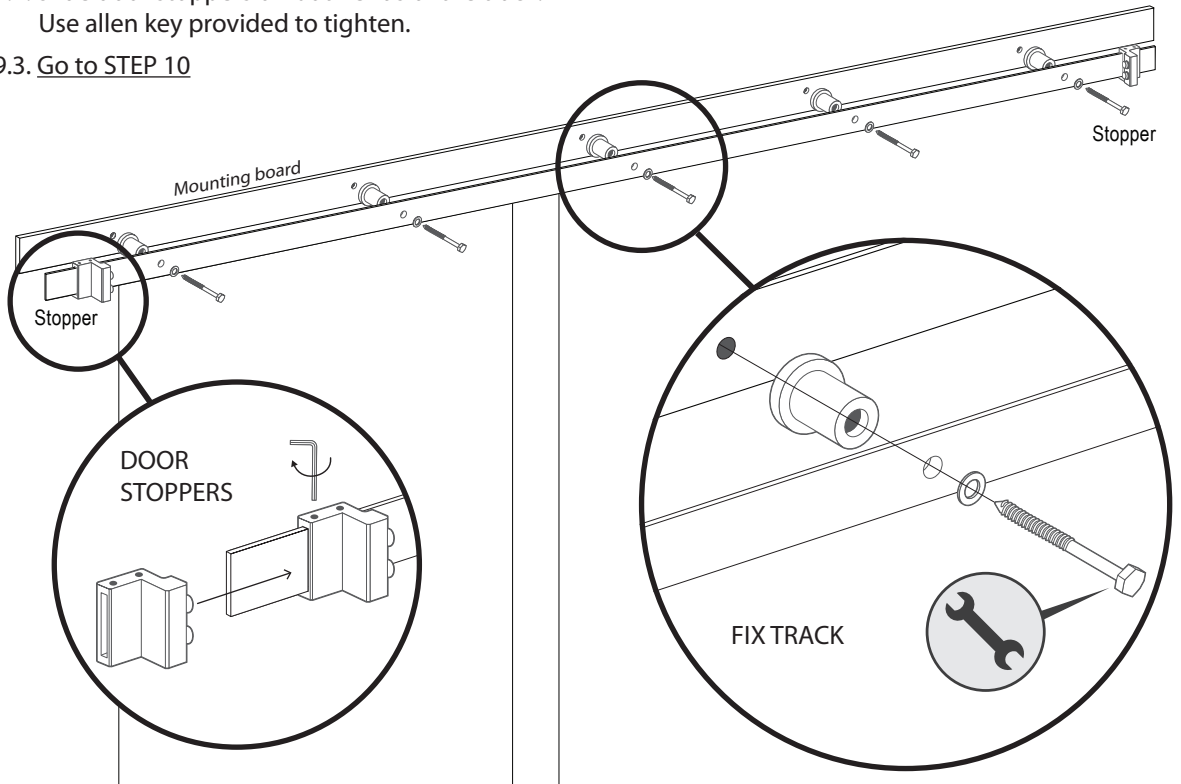
9. NON-CONCRETE WALL: ATTACHING TRACK TO MOUNTING BOARD



9.1. Install track with bolts, washers and spacers using a spanner.

9.2. Slide door stoppers on both ends of the track.
Use allen key provided to tighten.

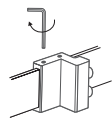
9.3. Go to STEP 10



10. HANGING DOOR AND ADJUSTING STOPPERS



Ensure door stoppers are fixed firmly in place before hanging door.



10.1. Ensure anti-jump blocks are in the unlocked position (A).

10.2. Place assembled door with rollers onto track.

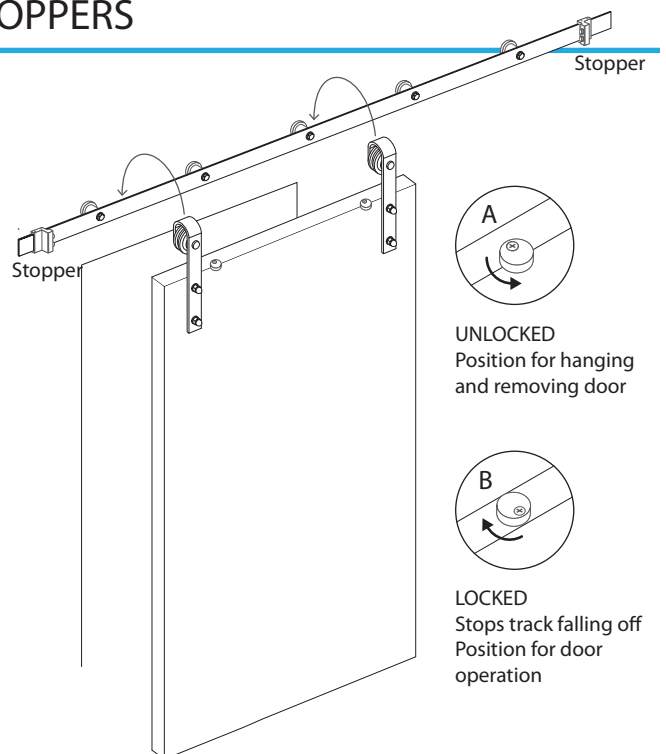
10.3. Rotate the anti-jump blocks to locked position (B).

10.4. Slide door back and forth to test how well the door covers the opening. Reposition stoppers as needed.

10.5. If less travel of the door is required, the stoppers can be moved inside end mounting bolts.

(TIP: If needed - remove the end mounting bolts and spacers, slide the stopper to the new location and reinstall bolt and spacer)

10.6. Go to STEP 11

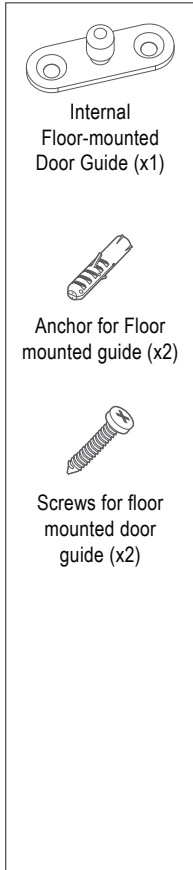




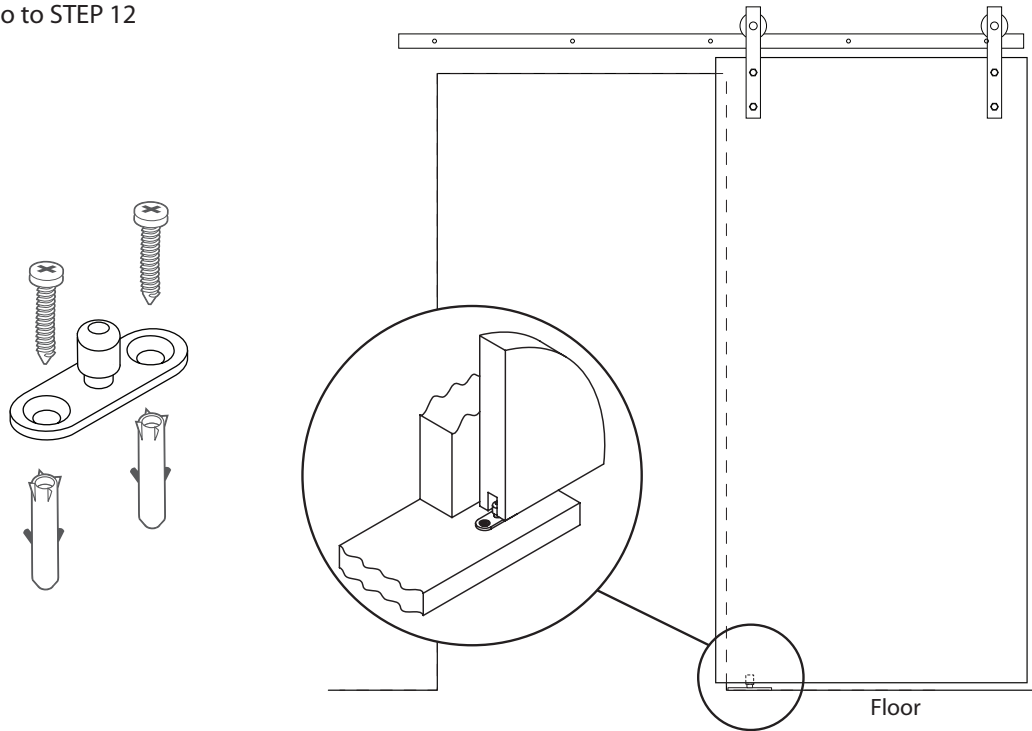
FRONTIER

BARN DOOR SLIDING SYSTEM

11. FLOOR-MOUNTED DOOR GUIDE INSTALLATION

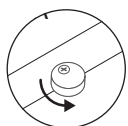


- 11.1. With door fully in the open position and hanging straight - position the floor mount door guide inside groove in the bottom of the door (see figure below for placement).
- 11.2. Slide the door back and forth to ensure the guide is properly placed. Mark location of guide.
- 11.3. Pre-drill and attach guide with supplied screws. If needed, supplied anchors can be used.
- 11.4. To fasten guide, the door may need to be removed.
- 11.5 Go to STEP 12

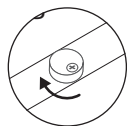


12. FINAL CHECK OF STOPPERS AND ANTI-JUMP BLOCKS

- 12.1. Check to see that stoppers are properly located and tightened in place.
- 12.2. Check to see anti-jump blocks are rotated to the LOCKED position before operating the door.



UNLOCKED
Position for hanging and removing door



LOCKED
Stops track falling off
Position for door operation

