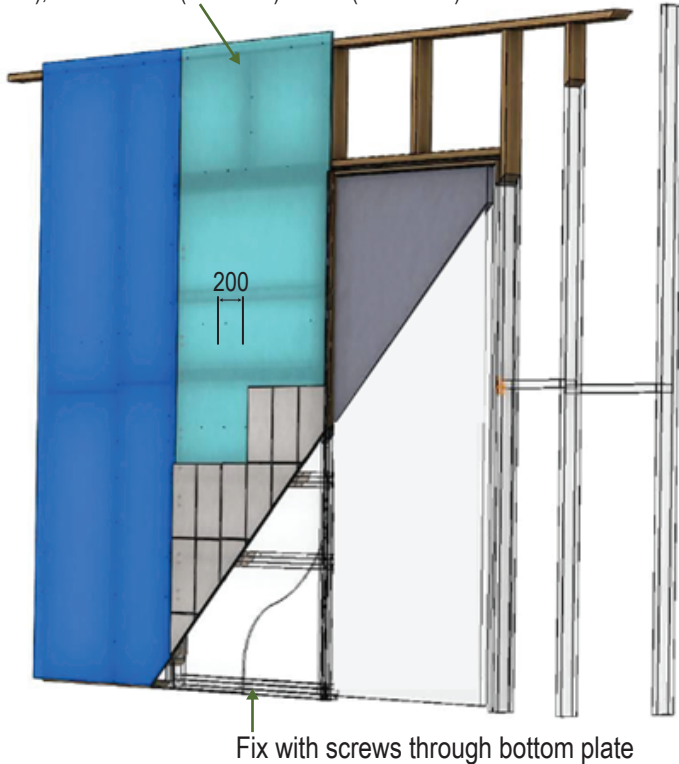




# EVOLUTION CAVITY UNIT

## TILING DIRECT TO CAVITY UNIT INSTALLATION INSTRUCTIONS

Minimum 6mm Fibre Cement Sheeting (Type A Category 3 or Type B Category 3) in accordance with AS/NZS 2908.2. Approved wall linings include Hume Cemboard (Prima), James Hardie (Villaboard) & CSR (CeminSeal)



### INSTALLING CAVITY FOR TILED AREA

Follow our Evolution Cavity Unit installation instructions as supplied with your cavity or download them on our website:

[www.humedoors.com.au/downloads#installation](http://www.humedoors.com.au/downloads#installation)

**IMPORTANT:** The below points must be followed when installing into a tiled area:

1. Track must be fixed using every pre-punched hole
2. Fix back post to stud with a minimum of 5 screws/nails, spaced evenly.
3. Ensure Cavity unit is plumb and level
4. Fix with screws through bottom plate

Once cavity unit is installed you are ready to apply sheeting and tile the wall.

Please follow the instructions for your cavity type below to ensure your wall is prepared correctly for tiling.

### HUME EVOLUTION TIMBER

#### APPROVED SHEETING MATERIAL

Minimum 6mm Fibre Cement Sheeting (Type A Category 3 or Type B Category 3) in accordance with AS/NZS 2908.2

Approved wall linings include Hume Cemboard (Prima), James Hardie (Villaboard) & CSR (CeminSeal)

#### REQUIRED FIXINGS

8G coarse thread self-tapping screws

For 70/75mm stud use 16mm long screws

For 90/100mm stud use 25mm long screws

**Screws must not penetrate inside pocket of cavity unit**

#### FIXING SHEET TO CAVITY UNIT

Fix Approved sheeting to cavity unit (see diagram) with 8G coarse thread screws as detailed above

Screws must be spaced 200mm apart (centred)

#### SIZE & WEIGHT

Tested for Max load of 40kg/m<sup>2</sup>

Sizes up to 2340 x 1200 (Door) x 70/75/90/100mm stud thickness

### HUME EVOLUTION STEEL

#### APPROVED SHEETING MATERIAL

Minimum 6mm Fibre Cement Sheeting (Type A Category 3 or Type B Category 3) in accordance with AS/NZS 2908.2

Approved wall linings include Hume Cemboard (Prima), James Hardie (Villaboard) & CSR (CeminSeal)

#### REQUIRED FIXINGS

8G self-drilling metal screws

For 64mm stud use 13mm long screws

For 70/75mm stud use 16mm long screws

For 90mm stud use 25mm long screws

**Screws must not penetrate inside pocket of cavity unit**

#### FIXING SHEET TO CAVITY UNIT

Fix Approved sheeting to cavity unit (see diagram) with 8G self-drilling screws as detailed above

Screws must be spaced 200mm apart (centred)

#### SIZE & WEIGHT

Tested for Max load of 45kg/m<sup>2</sup>

Sizes up to 2340 x 1200 (Door) x 64/70/75/90mm stud thickness

For further information please refer to test data on our website <https://www.humedoors.com.au/downloads#technical-information>